

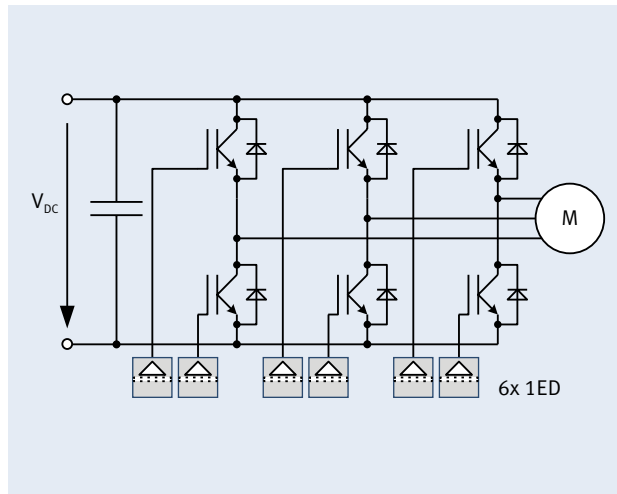
EiceDRIVER™

Driver ICs Selection Guide

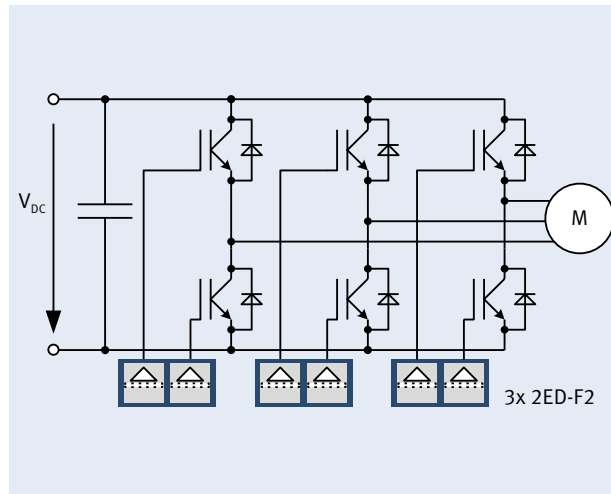
EiceDRIVER™ Driver ICs

3~Bridge Inverter for Motor Drives

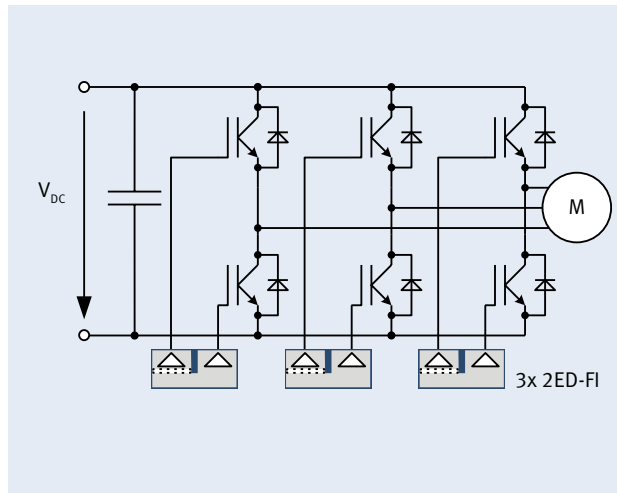
Isolated Single-Channel



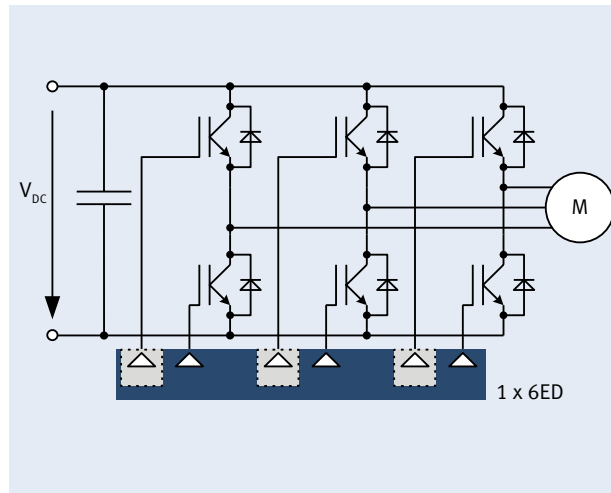
Isolated Dual-Channel



High-Side Isolated Half-Bridge

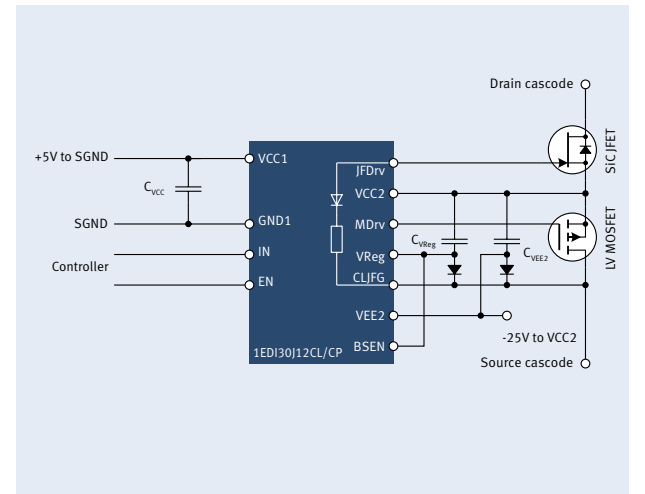


3~Bridge

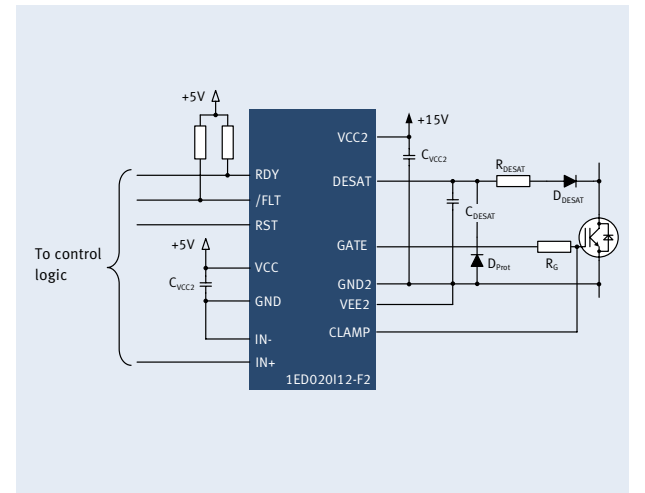


Solar Inverter

Infineon Direct Drive Technology

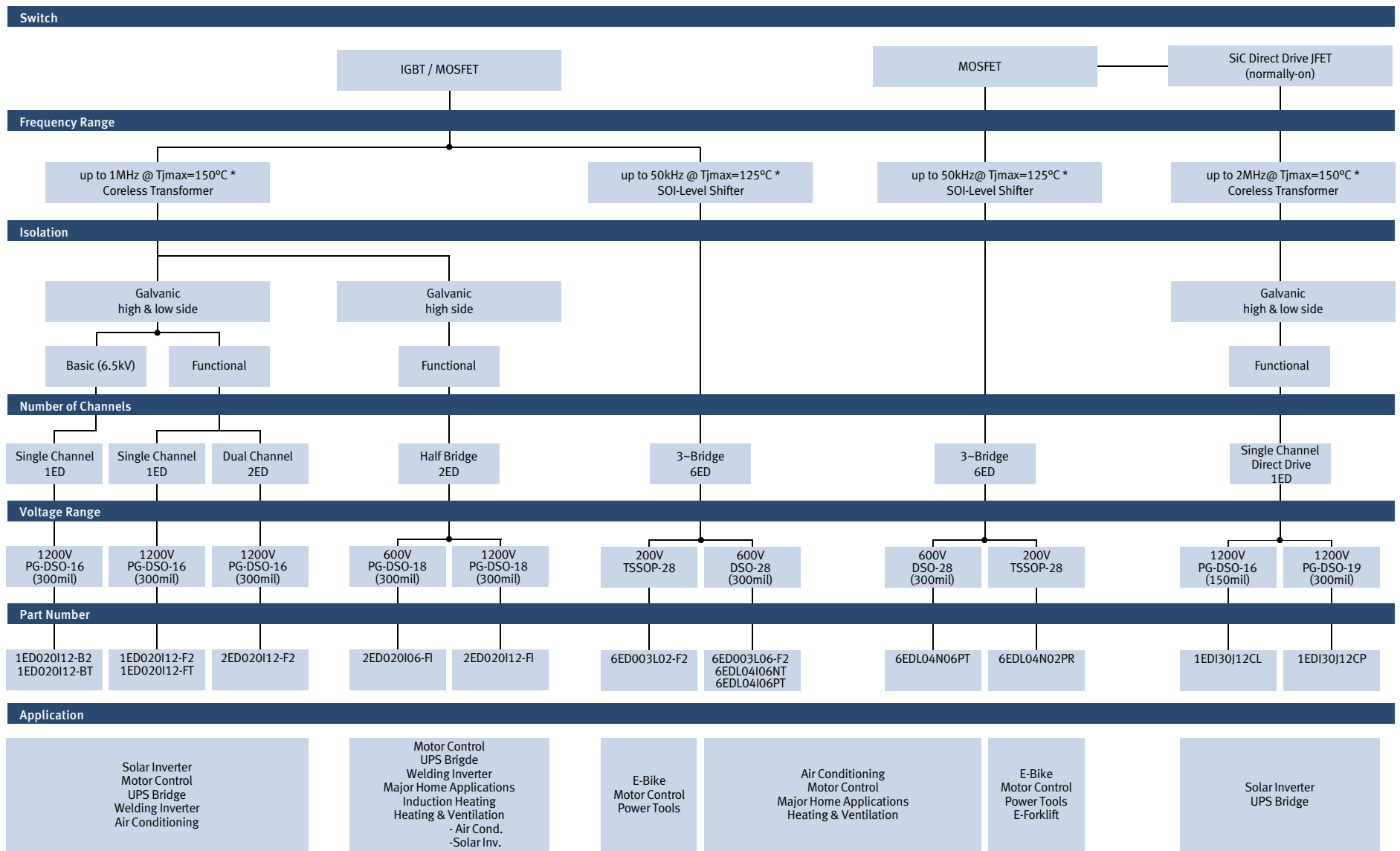


Typical usage of Single-Channel driver 1ED020112-F2/-B2



Level shift circuit
 Chip boundary
 Galvanic isolation
 Driver Output Buffer

Driver ICs Selection Tree



* Power loss considerations to be done by customer based on power switch selection
For Automotive Driver ICs please use the separate Selection Guide of Infineon.

Driver ICs Product Portfolio

Product Type	Package		Topology	Isolation	Voltage Class	Io+ / Io-	Turn On Propagation Delay (max)	Tj(max)	UVLO ON max	Fault Reporting	Shutdown / Enable	
	Type	Green										Halogen-Free
1ED020I12-B2	DSO-16	✓	✓	Single	Basic	1200*	2000 / 2000	195	150	12,6	DESAT	/RST
1ED020I12-BT	DSO-16	✓	✓	Single	Basic	1200*	2000 / 2000	2000	150	12,6	DESAT	/RST
1ED020I12-F2	DSO-16	✓	✓	Single	Functional	1200	2000 / 2000	195	150	12,6	DESAT	/RST
1ED020I12-FT	DSO-16	✓	✓	Single	Functional	1200	2000 / 2000	2000	150	12,6	DESAT	/RST
1EDI30J12CL	DSO-16	✓	✓	DirectDrive	Functional	1200	3000 / 3000	80	150	-17,2	-	EN
1EDI30J12CP	DSO-19	✓	✓	DirectDrive	Functional	1200	3000 / 3000	80	150	-17,2	-	EN
2ED020I06-FI	DSO-18	✓	✓	Half Bridge	Functional	600	1000 / 2000	105	150	13,5	-	/SD
2ED020I12-F2	DSO-36	✓	✓	Dual	Functional	1200	2000 / 2000	195	150	12,6	DESAT	/RST
2ED020I12-FI	DSO-18	✓	✓	Half Bridge	Functional	1200	1000 / 2000	105	150	13,5	-	/SD
6ED003L02-F2	TSSOP-28	✓	✓	3~Bridge		200	180 / 380	800	125	12,5	ITRIP	EN
6ED003L06-F2	DSO-28	✓	✓	3~Bridge		600	180 / 380	800	125	12,5	ITRIP	EN
6EDL04I06NT	DSO-28	✓	✓	3~Bridge		600	180 / 380	800	125	12,5	ITRIP	EN
6EDL04I06PT	DSO-28	✓	✓	3~Bridge		600	180 / 380	800	125	12,5	ITRIP	EN
6EDL04N02PR	TSSOP-28	✓	✓	3~Bridge		200	180 / 380	800	125	9,8	ITRIP	EN
6EDL04N06PT	DSO-28	✓	✓	3~Bridge		600	180 / 380	800	125	9,8	ITRIP	EN

* Basic isolation according to EN60747-5-2, recognized under UL1577